

Matthiola Anytime series

Matthiola incana

- Possibilities to extend the harvest season
- Stable bud initiation
- Less risk of delayed flowering in warmer periods



Please contact us for more information: [evanthia.nl](https://www.evanthia.nl) | sales@evanthia.nl

evanthia



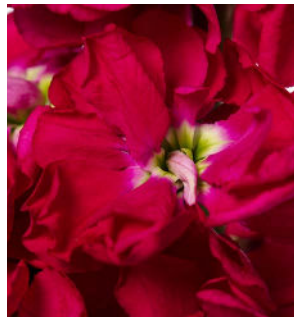
Matthiola Anytime is a good option to extend the harvesting season a bit, because the Anytime series has a stable bud initiation for longer period of time. Plant Anytime in winter until late spring for a longer harvest in spring and early summer. With Anytime you have less risk of delayed flowering in warmer periods, compared to other series in the market. No fuss or extra work. The Matthiola Anytime series is easy to select for doubleness after a cold treatment, resulting in an excellent series with 100% double flowers.

Flower profile:

Series:	Anytime
Genus & species:	Matthiola incana
Family:	Brassicaceae
Common name:	Stock
Usage:	Ornamental; commercial cut flower
Stem length:	65 to 70 cm
Breeder:	Evanthia Genetics
Starting material:	Raw seed



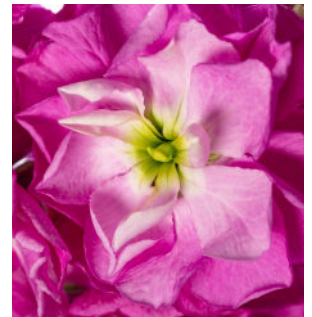
Anytime Deep Blue



Anytime Deep Red



Anytime Lavender



Anytime Pink



Anytime Rose



Anytime White



Anytime Yellow

Matthiola incana — Cultivation manual

Cut flower culture

Culture location: greenhouse

Sowing method TP

Sowing season Early winter until late spring

Germ temp. 15-18°C (59-64°F)

Growing temp. 16-18°C (60-65°F) day
13-16°C (55-60°F) night

Plug crop time

3-5 weeks

Crop duration

8-12 weeks with supplemental light,
otherwise 9 to 16 weeks from planting

Seed requirement

5 gr for 1000 plants

1 seed per plug

Pests/diseases

Cabbage butterflies, caterpillars, thrips,
aphids, clubroot, Sclerotinia, downy
mildew, powdery mildew.

Fertilization (f)

Nitrate-based fertilizer, low on N, low
on P. Fertilize twice a week until
harvest (175 to 225 ppm N/1.2-1.5 EC).
Keep EC at 1.5-2.0 mmhos/cm and pH
at 5,8 to 6,5. High pH (> 6,8) causes chlo-
rosis.

Cultivation tips

- Selectable types need a cold treatment: keep the double-flowering plants with pale green cotyledons (see sowing details).
- Matthiola is sensitive to Fusarium. When successively planted in the same year, sterilize (steam) the soil after the crop.

Sowing details

Pre-sow and transplant (TP):

Soil : sterile sowing mix

pH 5,5-6, EC 0.5

sow : 1 seed per plug (tray 288)

cover: yes

Days 0 - 4

(m) moist

(t) 15-18°C (59-64°F)

(f) < 100 ppm N, < 0.7 EC

Days 4 - 7 (for selectable series)

Use a cold treatment or short-day treat-
ment to select for doubleness:

OPTION 1: Cold treatment:

Once germinated, keep at 4-5°C (41°F) for 4
to 7 days, followed by 1 to 2 days at 16-18°C
(60-65°F) in order to select the double-
flowering light-green plants.

OPTION 2: Short-day treatment:

Create a short day environment. For Mat-
thiola this means 11 hours of light and 13
hours of darkness. Please note: when the
night falls, open the screening to prevent
heat accumulation. Make sure to close the
screen before dawn.

Adjust the initiation of short days to the
heat levels in the greenhouse.

Days 7 - 14

(m) normal

(t) 15-18°C (59-64°F)

(l) 16.000-27.000 lux (1500-2500 fc)

(f) < 100 ppm N, < 0.7 EC

Days 15 - 21

(m) dry - normal to dry

(t) 15-18°C (59-64°F)

(l) 27.000-54.000 lux (2500-5000 fc)

(f) 100-175 ppm N, < 0.7-1.2 EC

Notes

- For best performing series in your climatic conditions, check the description with the series. In cooler climates Matthiola is only cultivated in the greenhouse.

Growing on

Soil/media

(deep) well-drained fertile soil, pH 5,5-
6, 0,5 EC

Netting

Netting is advised

Pinching

No pinching needed

Plants density

Summer 65-75 plants/m² (6-7 plants/ft²).

Winter: 65 plants/m² (6 plants/ft²).

Moisture (m)

Plant in moist soil. Do not start (drip)
irrigation too soon or the seedlings may
get leggy. Moisture level 2-3. Keep dryer
towards cutting stage.

Temperature (t)

16-18°C (60-65°F) during the day, 13-16°C
(55-60°F) at night. High heat (> 18°C)
can stunt plants or prevent flower
development. Too low temperatures will
influence stem length.

Light (l)

Not daylight sensitive, but supplemental
lighting - 3000-6000 lux (280-560 fc) for 14-
16 hours) enables late summer planting.

Harvest

- Harvest when 4 to 5 flowers per stem are open.

For post harvest treatments, see:
www.vbn.nl/en/list-pre-treatments/

This information is for general guidance only, and is in some cases specific for North European conditions.
No guarantee is given for the result of the crop, nor is liability accepted for the consequences of applying the indications given.